



M/V XII & RAM XIV Liftboat Vessel Class 200' Leg

DIMENSIONS and REGULATORY INFORMATION

Length Overall	115' Length	Open Deck Area	4,800 sq ft
Length (Barge Only)	111'	Design Draft	9'5"
Beam Overall	74'		
Beam (Barge Only)	66'		
Depth (Barge Only)	10'		
Classification	Lloyd's	Flag	U.S.
Certifications	Loadline, Lloyd's		

HULL CHARACTERISTICS & LEGS

Gross Tonnage	192	Number of Legs	3
Net Tonnage	130	Length	200'
Max Deck Cargo	800,000#	Size	66" diameter
		Wall Thickness	1 3/4" (braced inside)

PERFORMANCE & FUEL

Max Speed	6 knots	Fuel Capacity	9,730 gallons
Cruise Speed	6 knots	Potable Water	15,000 gallons

MACHINERY & PROPULSION

Main Engines	Two (2) 3412 CAT Diesel	Generator Engines	Two (2) 3306 CAT Diesel
Rated Ship	1080 HP (approx.)	Generator	95 kw @ 1200 RPM
Reduction Gear	MG516/5.1 Twin Disc		

CRANE (NAUTILIUS) HYDRAULIC

Capacity	25 & 125 Ton	Boom Length (25 Ton)	Telescopic 70'
		Boom Length (125 Ton)	Fixed 100'

PADS & JACKING SYSTEM

Length	32'	VHF	Loud Hailer
Width	16'	SSB	Radar
Depth	2'6"	Fathometer	DDS TV
Configuration	4-Way Slope	Tilt Alarm	
Max. Working Water Depth	160'	GPS	
Max. Sea Conditions (Jacking)	5'		

ELECTRONICS

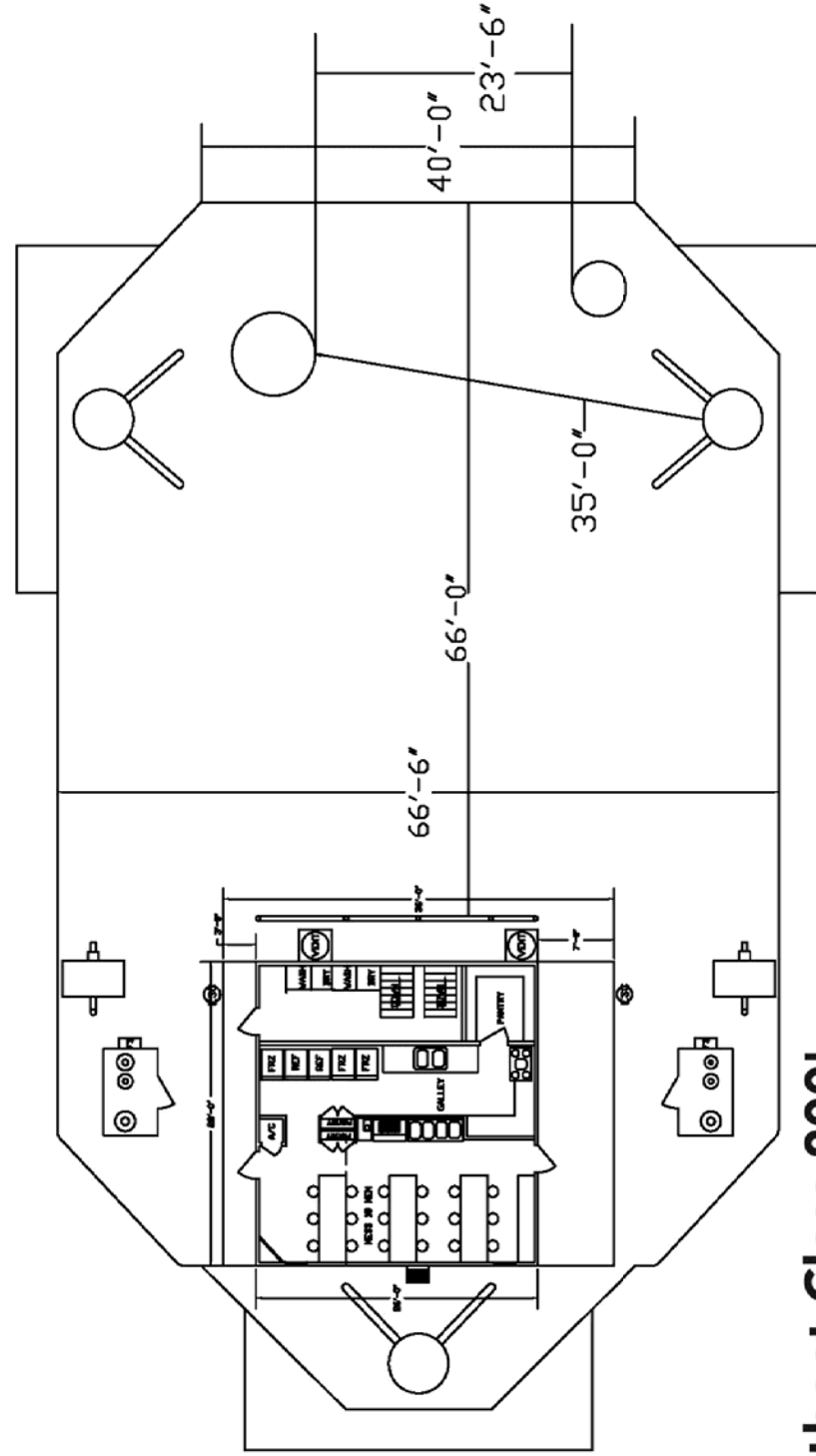
ACCOMODATIONS

Available Berths (Excluding Crew)

23

M/V RAM XII & RAM XIV CLASS 200' LEG GENERAL ARRANGEMENTS

DIMENSIONS	PADS	CRANE: HYDRAULIC	CAPACITIES:
DEPTH OVERALL 117'	LENGTH 28'	CAPACITY 25 & 125 TON	FUEL APPROX. 9730 GALS.
DEPTH BARGE ONLY 74'	WIDTH 16'	BOOM LENGTH 425 TON TELESCOPIC 70' BOOM	POTABLE WATER APPROX. 15,000 GALS.
DEPTH BARGE ONLY 74'	CONFIGURATION 4-WAY SLOPED	CRANE ENGINE CAT DIESEL	
DEPTH BARGE ONLY 66.5'			
DEPTH BARGE ONLY 10'			
DEPTH BARGE ONLY 4800 SQ/FT			
HULL CHARACTERISTICS:	SPEED	PROPULSION:	LIVING QTS.
DISPLACEMENT 198 TONS	SIX (6) KNOTS	TWO (2) CAT 3412	BERTHS 29 (INCLUDING BOAT CREW)
STOWAGE 130 TONS	JACKING:	APPROXIMATELY 1000 HP	CENTRAL
DECK CHARGE 600,000 LBS.	MAXIMUM WORKING WATER DEPTH 160'	REDUCTION GEAR TVIN DISC MCR16	COLOR TV, SOFAS, LOUNGE SEAT
	MAXIMUM SEA LOADING UP OR DOWN 5'		6-CALL LEVELS
			18 SEATS, HEATERS, FRZLS
			2 WASHERS/DRYERS
LEGS:		GENERATORS:	ELECTRONICS
NUMBER 3		ENGINES TWO (2) CAT 3306	VIB. SSB, FATHOMETER, LAUD HALLER, TILT ALARM, GPS,
DEPTH 65' DIA.		GENERATOR TWO (2) 95 KW	RAISER
ALL THICKNESS 3/4" - 1"			



Liftboat Class 200'
M/V Ram XII, M/V Ram XIV

**M/V RAM XII & RAM XIV
CLASS 200' LEG
BOOM CHART**

**LIFTING LOAD CAPACITY CHART
MODEL RAM 25 TELESCOPIC**

**LIFTING LOAD CAPACITY CHART
MODEL RAM 125-100**

**25 TON CRANE
70' BOOM
CRANE**

**125 TON CRANE
100' BOOM CRANE**

MAIN HOIST

MAIN HOIST

RADIUS (FT)	BOOM ANGLE (DEG)	4- PART REEVING		RADIUS (ft)	BOOM ANGLE (deg)	8- PART REEVING	
		STATIC (LB)	DYNAMIC (LB)			Static (LB)	Dynamic (LB)
10	82	47,600	31,700	25	80	255	170
15	76	38,300	25,500	30	77	255	170
20	72	35,200	23,500	35	74	216	144
25	68	29,000	19,900	40	71	188	125
30	64	26,000	17,300	45	68	165	110
35	60	23,100	15,400	50	65	147	98
40	54	18,600	12,400	55	62	131	87
45	50	14,500	9,700	60	58	118	78
50	44	12,900	8,600	65	55	106	70
55	38	11,800	7,900	70	51	97	64
60	30	10,700	7,200	75	47	89	59
65	20	9,900	6,600	80	43	80	53
70	0	6,800	4,600	85	39	72	48
				90	34	66	44
				95	28	62	41
				100	20	56	37
				105	7	51	34
				106	0	45	30